

20 in 20: Week 3 – July 16th

Ex. 1 Which number is bigger?

25×10^{10} or 9×10^9

Ex. 3 Write the number in scientific notation.

0.000072
 7.2×10^{-5}

Ex. 5 Simplify the following.

$8.0 - 6.3 = 1.7$

Ex. 7 Simplify the following.

$36 \div 2.6 = 18.6$
 $\neq 108$

Ex. 9 Solve the equation.

$-\frac{x}{3} = 7$ $x = -21$

Ex. 11 Write an equation of the line that goes through the following points.

$(0, 3)$ $(-2, -1)$
 $m = \frac{-1-3}{-2-0} = \frac{-4}{-2} = 2$

$y = 2x + 3$

Ex. 2 Write the number in scientific notation.

$53,000,000,000$
 5.3×10^{10}

Ex. 4 Simplify the following.

$-2.5 - 1.5 = -4$

Ex. 6 Simplify the following.

$4.3 - 6.5 = -2.2$

Ex. 8 Solve the equation.

$\frac{2}{3}x = 8$ $x = 20$

Ex. 10 Simplify.

$15^0 = 1$

Ex. 12 Write an equation of the line that goes through the following points.

$(5, -4)$ $(0, -6)$

$\frac{-6 - (-4)}{0 - 5} = \frac{-2}{-5}$

$y = \frac{2}{5}x - 6$

Ex. 13 Line $y = -8x + 1$ is graphed.
What is the slope of a line parallel to this line? Perpendicular?

Parallel: -8
Perpendicular: $1/8$

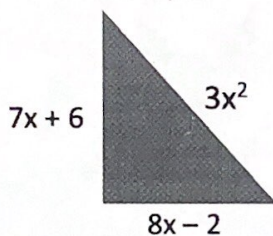
Ex. 15 Solve the equation.

$$\frac{x}{4} + 3 = 1$$

$$\frac{x}{4} = -2$$

$$x = -8$$

Ex. 17 Find the perimeter and the area of the shape.



$$\frac{1}{2} (7x+6)(8x-2)$$

$$(7x+6)(4x-1)$$

Perimeter: $3x^2 + 15x + 4$

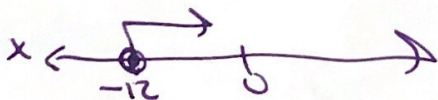
Area: $28x^2 + 17x - 6$

Ex. 19 Solve and graph the inequality.

$$-\frac{3}{4}x + 1 \leq 10$$

$$-\frac{3}{4}x \leq 9$$

$$x \geq -12$$



Ex. 14 Line $y = \frac{1}{3}x + 4$ is graphed.
What is the slope of a line parallel to this line? Perpendicular?

Parallel: $1/3$
Perpendicular: -3

Ex. 16 Solve the equation.

$$\frac{2x-1}{5} = 3$$

$$2x-1 = 15$$

$$2x = 16$$

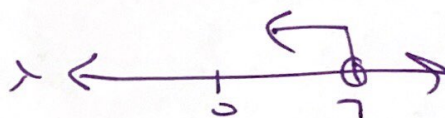
$$x = 8$$

Ex. 18 Solve and graph the inequality.

$$3x + 4 < 25$$

$$3x < 21$$

$$x < 7$$



Ex. 20 Solve the system of equations.

$$y = 3x + 4$$

$$2x + 3y = 1$$

$$(-1, 1)$$

$$2x + 3(3x + 4) = 1$$

$$2x + 9x + 12 = 1$$

$$11x = -11$$

$$x = -1$$